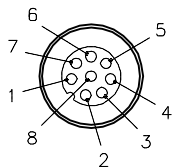


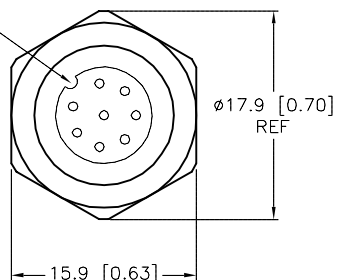
# MALE END VIEW



- 1 = WHITE
- 2 = BROWN
- 3 = GREEN
- 4 = YELLOW
- 5 = GREY
- 6 = PINK
- 7 = BLUE
- 8 = RED



KEYWAY ORIENTATION  
MAY VARY



END VIEW  
LOCKNUT REMOVED

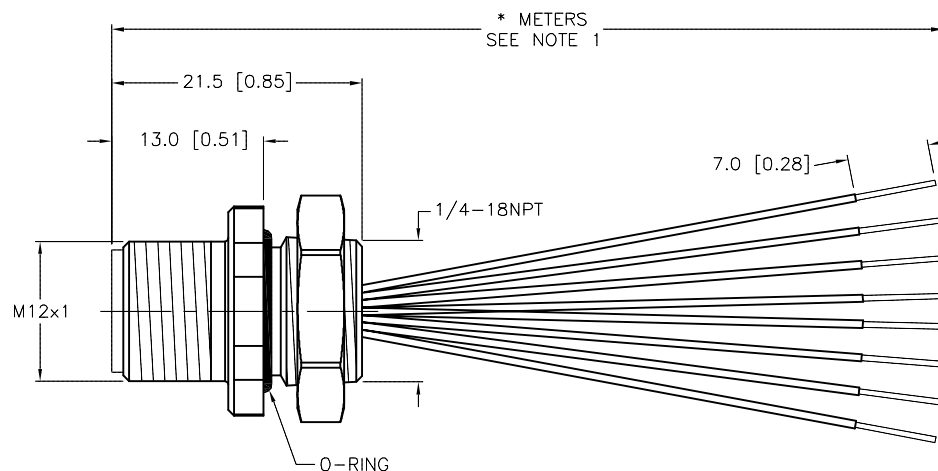
CABLE LENGTH	TOLERANCE*
ALL LENGTHS	+ 4% (OR 50mm) OF LENGTH - 0% (OR 0mm) OF LENGTH WHICHEVER IS GREATER
STRIP LENGTH	TOLERANCE*
0-7mm	±0.5mm
8-29mm	±1.0mm
30-49mm	±2.0mm
50-69mm	±3.0mm
70-100mm	±4.0mm
OVER 100mm	±5.0mm
*UNLESS OTHERWISE SPECIFIED	

## NOTES:

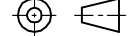
- "\*" DESIGNATES LEAD LENGTH IN METERS. CONTACT TURCK TO ORDER SPECIFIC LENGTHS.

## SPECIFICATIONS

CONTACT CARRIER MATERIAL	NYLON OR TPU
CONTACT MATERIAL/PLATING	BRASS/GOLD
HOUSING MATERIAL/PLATING	BRASS/NICKEL
O-RING MATERIAL	NITRILE
RATED CURRENT [A]	2.0 A
RATED VOLTAGE [V]	60 VAC/75 VDC
CONDUCTOR INSULATION MATERIAL	PVC
NUMBER OF CONDUCTORS [AWG]	8x24 AWG
TEMPERATURE RATING	-40°C to +105°C (-40°F to +221°F)
PROTECTION CLASS	MEETS NEMA 1,3,4,6P AND IEC IP68



SOURCE DRAWING - FOR REFERENCE ONLY

RELATED DOCUMENTS		3RD ANGLE PROJECTION		<div>THIS DRAWING IS CONFIDENTIAL AND THE PROPERTY OF TURCK INC. USE OF THIS DOCUMENT WITHOUT WRITTEN PERMISSION IS PROHIBITED.</div> <div><b>TURCK inc</b> <i>High Technology Sensors and Automation Controls</i></div> <div>3000 CAMPUS DRIVE MINNEAPOLIS, MN 55441 1-800-544-7769 (763) 553-7300 (763) 553-0708 fax turck.com</div>			
1. 2. 3. 4.							
MATERIAL		DRFT RDS				DATE 04/08/02	
SEE SPECIFICATIONS		APVD				SCALE 1=.7	
FINISH		UNIT OF MEASUREMENT <b>MILLIMETER [ INCH ]</b>		DESCRIPTION  FS 8-*/18.25			
SEE SPECIFICATIONS				IDENTIFICATION NO.			
		CONTACT TURCK FOR MORE INFORMATION		REV D			
				FILE: 777003696			
		DO NOT SCALE THIS DRAWING		SHEET 1 OF 1			

D	ADD ENDVIEW & UPDATE DRAWING	NF	01/12/16	53050
REV	DESCRIPTION	BY	DATE	ECO NO.